

Airport information:

Country: United Kingdom

City: BELFAST

Coordinates: N 54° 39.5', W 006° 12.9'

Elevation: 268

Customs: Customs: 01APR-31OCT H24, 01NOV-31MAR MON-FRI 0700-2300, SAT, SUN PN

Fuel: 100LL, Jet A1

RFF: CAT 7, CAT 8 & 9 O/R 24HR PNR

hours: H24

Runways:

Runway 07

Takeoff length: 2780, Landing length: 2780

Runway 17

Takeoff length: 1791, Landing length: 1791

Runway 25

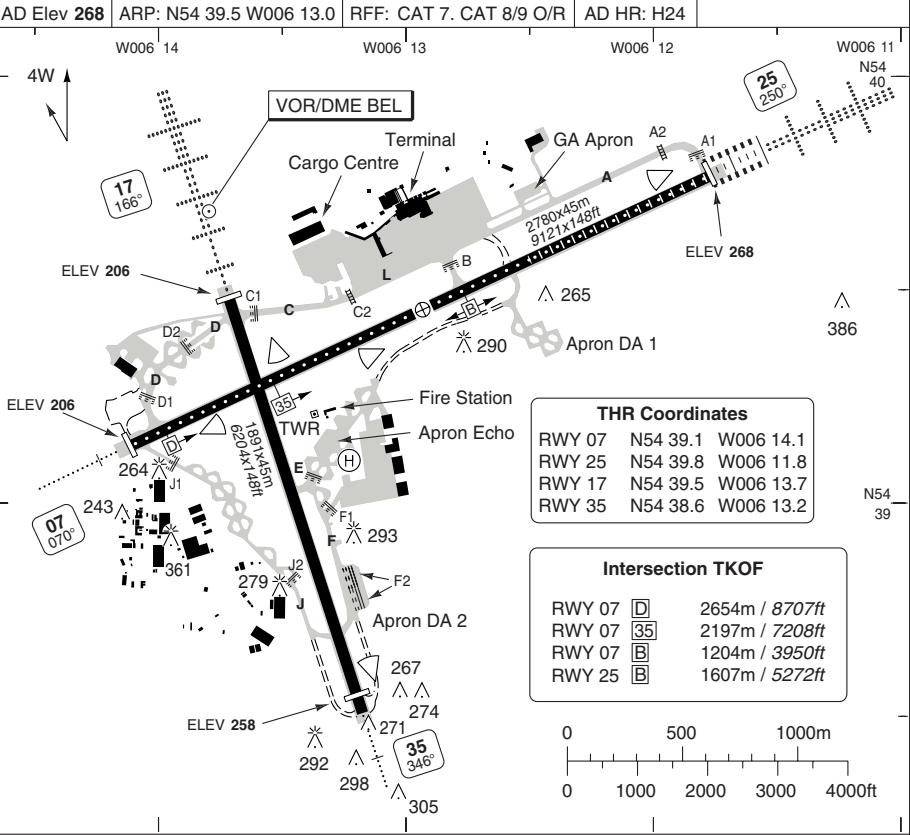
Takeoff length: 2780, Landing length: 2780

Runway 35

Takeoff length: 1891, Landing length: 1799

AERODROME

Aldergrove GND 121.75	TWR 118.3	ATIS 128.2	
AD Elev 268	ARP: N54 39.5 W006 13.0	RF: CAT 7. CAT 8/9 O/R	AD HR: H24



THR Coordinates	
RWY 07	N54 39.1 W006 14.1
RWY 25	N54 39.8 W006 11.8
RWY 17	N54 39.5 W006 13.7
RWY 35	N54 38.6 W006 13.2

Intersection TKOF	
RWY 07 D	2654m / 8707ft
RWY 07 35	2197m / 7208ft
RWY 07 B	1204m / 3950ft
RWY 25 B	1607m / 5272ft

RWY	Slope	TORA m/ft	LDA m/ft	ALS	REDL	RCLL	Additional
07	+0.7	2780 / 9121	2780 / 9121	H-E ①	H	15m	P 3° (74)
25	-0.7	2780 / 9121	2780 / 9121	H-A	H	15m	P 3° (57)
17	+0.8	1791 / 5876	1791 / 5876	H-C	H	-	P 3° (55)
35	-0.8	1891 / 6204	1799 / 5902	H-E ②	H	-	P 3° (47)

① 439m. ② 522m.

EU OPS TAKE OFF MINIMA

RWY	Facilities	RVR			
		A B C	D		
25	HRCLL + HREDL + Multiple RVR + HUD	Ap.O	LVTO	75m	75m
	HRCLL + HREDL + Multiple RVR	Ap.O	LVTO	125m	150m
07/25	RCLL + REDL + Multiple RVR		LVTO	150m	200m
	RCLL + REDL		LVTO	200m	250m
ALL	RCL (day only) or RCL + REDL		LVTO	250m	300m
	RCL (day only) or RCL + REDL			400m	400m
	NIL (day only)			500m	500m

© Navitech - egaa01laorg0

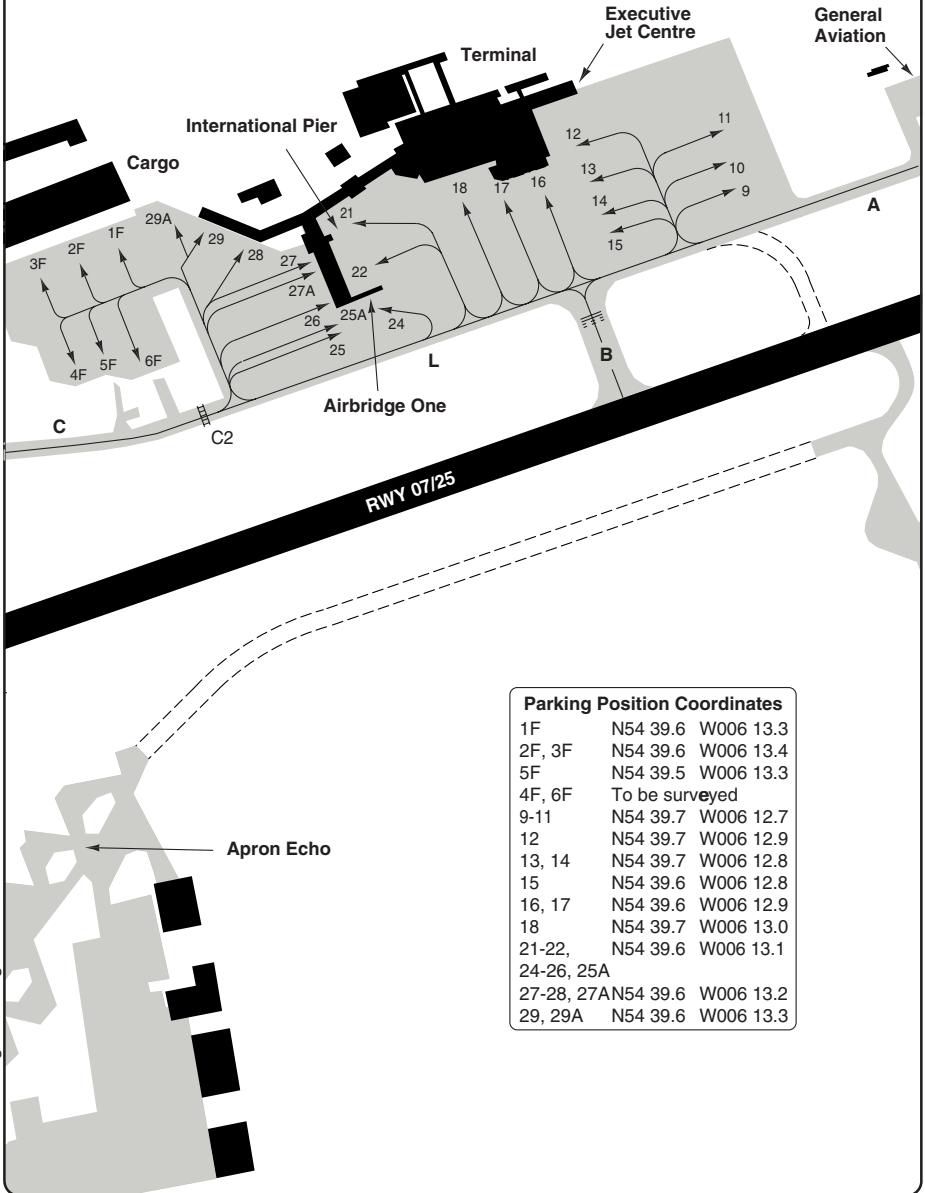
Change: VAR, OBST, RWY HDG.

THIS CHART IS A PART OF NAVIGRAPH NDAC AND IS INTENDED FOR FLIGHT SIMULATION USE ONLY

AERODROME Parking

10 - 2

Aldergrove GND 121.75	TWR 118.3	ATIS 128.2
--------------------------	--------------	---------------



Parking Position Coordinates		
1F	N54 39.6	W006 13.3
2F, 3F	N54 39.6	W006 13.4
5F	N54 39.5	W006 13.3
4F, 6F	To be surveyed	
9-11	N54 39.7	W006 12.7
12	N54 39.7	W006 12.9
13, 14	N54 39.7	W006 12.8
15	N54 39.6	W006 12.8
16, 17	N54 39.6	W006 12.9
18	N54 39.7	W006 13.0
21-22,	N54 39.6	W006 13.1
24-26, 25A		
27-28, 27A	N54 39.6	W006 13.2
29, 29A	N54 39.6	W006 13.3

© Navitech - egaa02laorg0

Change: New print.

THIS CHART IS A PART OF NAVIGRAPH NDAC AND IS INTENDED FOR FLIGHT SIMULATION USE ONLY

GENERAL

GENERAL

1. AERODROME RESTRICTION

Aircraft must contact ATC no earlier than 20mins prior to EOBT to obtain AWY CLR.

2. CAUTION

- 2.1 High ground to E and NE of aerodrome.
- 2.2 Heli activity south of RWY 07/25.
- 2.3 Langford Lodge airfield, 3nm SW with similar layout.
- 2.4 Hazardous numbers of whooper swans and small gulls 1.9nm SW of aerodrome.

3. CIRCUITS

RWY 25 right hand circuit.

4. NOISE ABATEMENT PROCEDURE

ARRIVAL

- (22-07). The CDA procedure is to be employed for all APCH to all RWY.

- Pilots should enforce the following speed restrictions:

- (a) 220kt from HP (or 20nm from touchdown) during intermediate APCH phase.
- (b) 180kt on base leg/closing heading to ILS
- (c) Initially on ILS between 160kt and 180kt, and thereafter 160kt to D4.

DEPARTURE

- (22-07). ACFT with MTOW>5700kg climb to **2000** before commencing turn.

5. TWY RESTRICTION

- 5.1 TWY F width 15m/ 49ft.
- 5.2 Aircraft using RWY 07 are required to backtrack from entry point at D for full take-off run. Turning area 70m/230ft wide at RWY 07 THR.
- 5.3 Aircraft landing RWY 17 are required to backtrack runway. Turning area is 90x85m (295x279ft) to the south of RWY 35 displaced threshold.

6. ADDITIONAL INFORMATION

When within 40nm of EGAA, maintain a listening watch on APP freq. Select transponder code 7045 in order to alert ATC. Squawking 7045 will receive no ATC service. ACFT displaying 7045 are not expected to contact ATC under normal circumstances. ACFT remain responsible for their own navigation, separation, terrain clearance & are expected to remain clear of CAS at all times. When ceasing listening watch or no longer required within 40 mn of EGAA, deselect 7045.

DEPARTURE

1. DE-ICING

- 1.1 De-icing of RWY will take priority over all other operations at the discretion of the Airport Authority in winter. ATC will inform pilots of any expected delays.
- 1.2 RWY 17/35 and associated TWY will not be de-iced.

2. NORTH ATLANTIC JET DEPARTURES

- 2.1 Jet aircraft routing via OAC GOMUP must request Oceanic CLR at least 30min prior to DEP. If entering OAC via other entry points, request CLR from Shanwick ASAP after DEP.
- 2.2 Oceanic CLR (incl. M allocation) issued prior to DEP is valid only from OAC Entry Point. Domestic ATC CLR to OAC Entry Point issued separately.

3. DEPARTURES VIA IOM

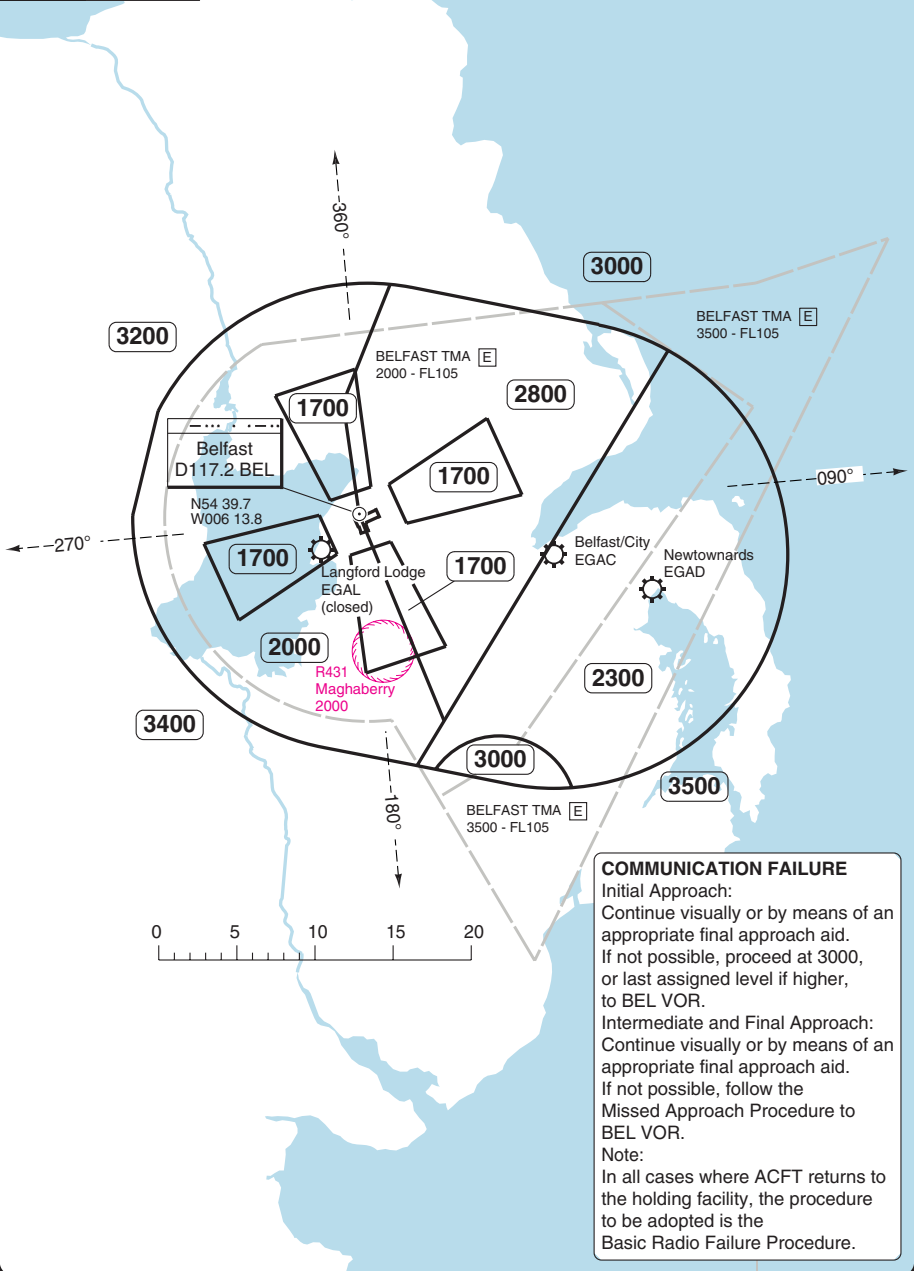
Aircraft unable to reach FL290 by KELLY must advise Belfast Aldergrove prior to pushback, giving anticipated FL at KELLY.

RADAR Minimum Altitudes

Aldergrove BELFAST

Aldergrove APP 128.5	SRA 120.9	TWR 118.3	GND 121.75	ATIS 128.2
-------------------------	--------------	--------------	---------------	---------------

TL ATC AD Elev 268



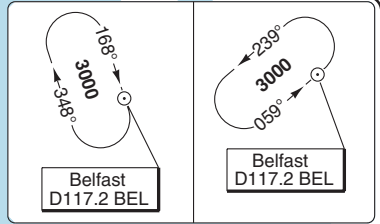
COMMUNICATION FAILURE
 Initial Approach:
 Continue visually or by means of an appropriate final approach aid. If not possible, proceed at 3000, or last assigned level if higher, to BEL VOR.
 Intermediate and Final Approach:
 Continue visually or by means of an appropriate final approach aid. If not possible, follow the Missed Approach Procedure to BEL VOR.
 Note:
 In all cases where ACFT returns to the holding facility, the procedure to be adopted is the Basic Radio Failure Procedure.

ARRIVAL Routes

Aldergrove BELFAST

Aldergrove APP 128.5	TWR 118.3	GND 121.75	ATIS 128.2
--------------------------------	---------------------	----------------------	----------------------

TL ATC AD Elev 268



Turnberry D117.5 TRN 355

BLACA
D39 BEL
N54 53.0
W005 09.5

Belfast
D117.2 BEL

N54 39.7
W006 13.7



Aldergrove
332 OY

N54 41.6
W006 05.1
Belfast City
EGAC

- 1 From L10 at FL60 and below.
- 2 From L10 at FL80 and above.
- 3 From UP6/P6 at FL250 and above.

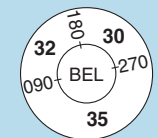
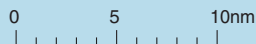
R431
Maghaberry
2000

NELBO
D34 BEL
N54 29.4
W005 18.2

RINGA
D28 BEL
N54 23.9
W005 34.3

ABSUN
D22 BEL
N54 17.5
W006 15.3

NEVRI
D36 BEL
N54 04.1
W006 16.2

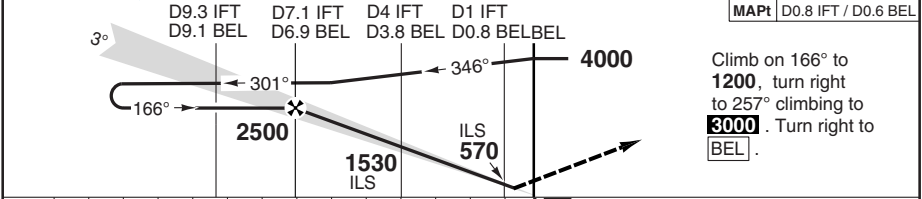
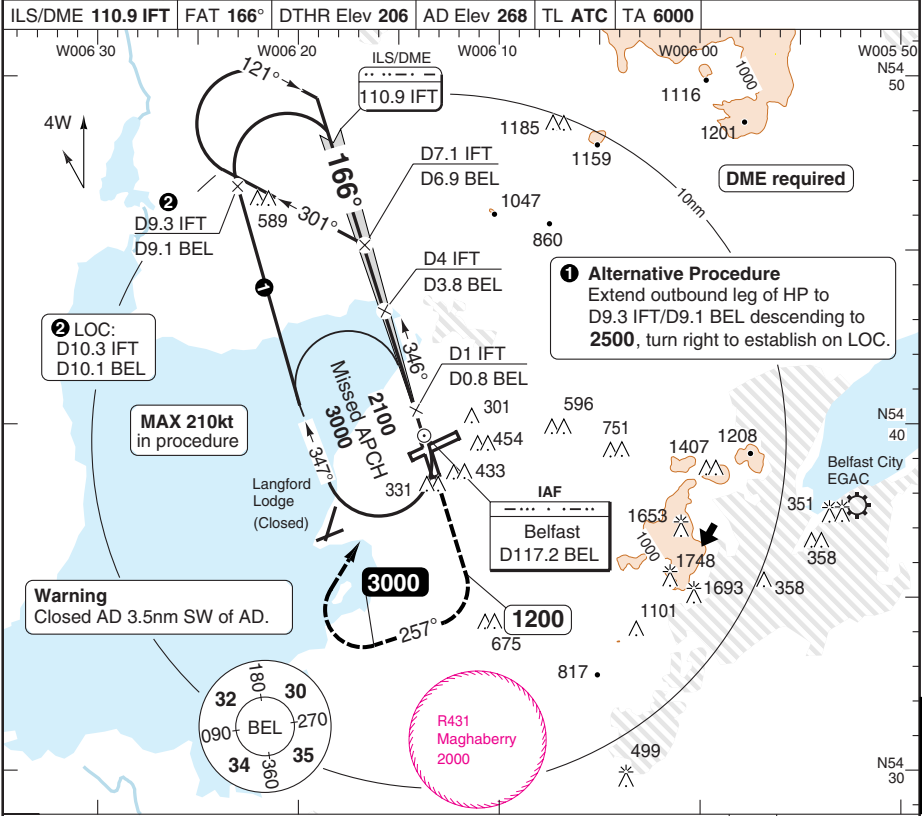


Change: New print.

THIS CHART IS A PART OF NAVIGRAPH NDAC AND IS INTENDED FOR FLIGHT SIMULATION USE ONLY

ILS RWY 17

Aldergrove APP 128.5	RAD 120.9	TWR 118.3	GND 121.75	ATIS 128.2
ILS/DME 110.9 IFT		FAT 166°	DTHR Elev 206	AD Elev 268
TL ATC		TA 6000		



nm 14 13 12 11 10 9 8 7 6 5 4 3 2 1 0						TCH 50				
ACFT	ILS+DME	LOC+DME	Circling			DME BEL	3° ALT	DME IFT	3° ALT	LDA 1791x45 5876x148ft P 3° (55)
A			750 (482) 1.5km			6	2220	6	2170	
B	410 (200) 550m	480 (274) 750m	840 (572) 1.6km			5	1910	5	1850	
C			1180 (912) 2.4km			4	1590	4	1550	
D			1260 (992) 3.6km			3	1290	3	1230	
						2	980	2	890	
						1	660	1	570	
GS	80	100	120	140	160					
ROD 3°	420	530	640	740	850					

Use DME BEL only when IFT not available.

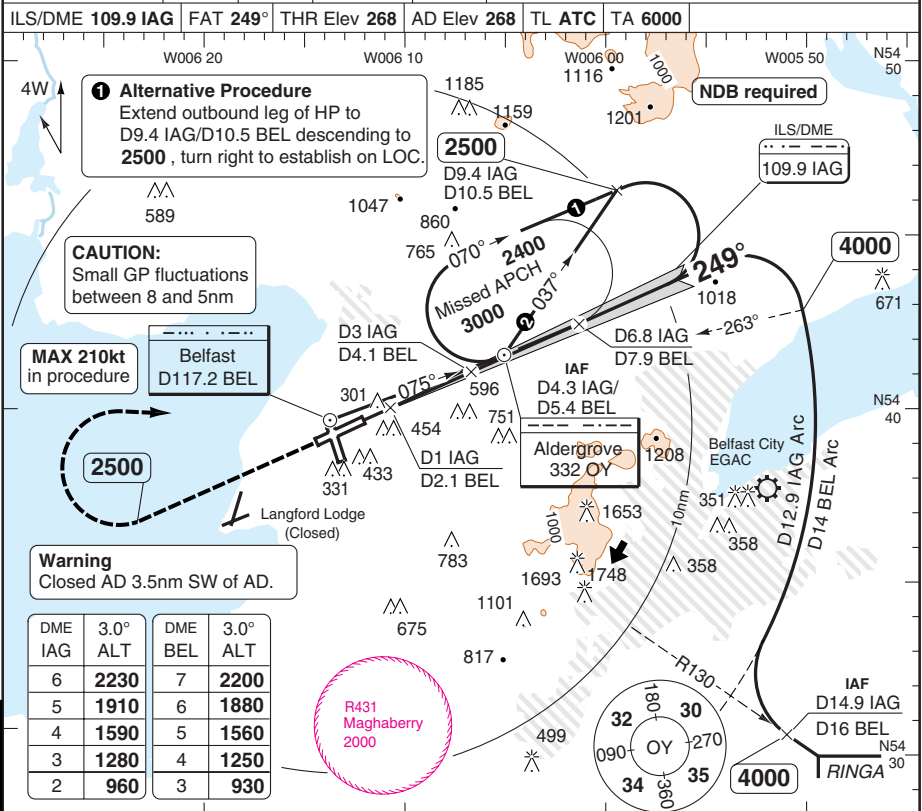
© Navtech - egaa01iaip00

50 - 1

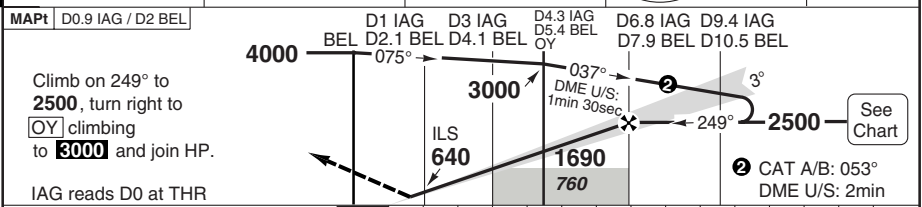
FALS

ILS Y RWY 25

Aldergrove APP 128.5	RAD 120.9	TWR 118.3	GND 121.75	ATIS 128.2
ILS/DME 109.9 IAG				
FAT 249°				
THR Elev 268				
AD Elev 268				
TL ATC				
TA 6000				



DME IAG	3.0° ALT	DME BEL	3.0° ALT
6	2230	7	2200
5	1910	6	1880
4	1590	5	1560
3	1280	4	1250
2	960	3	930

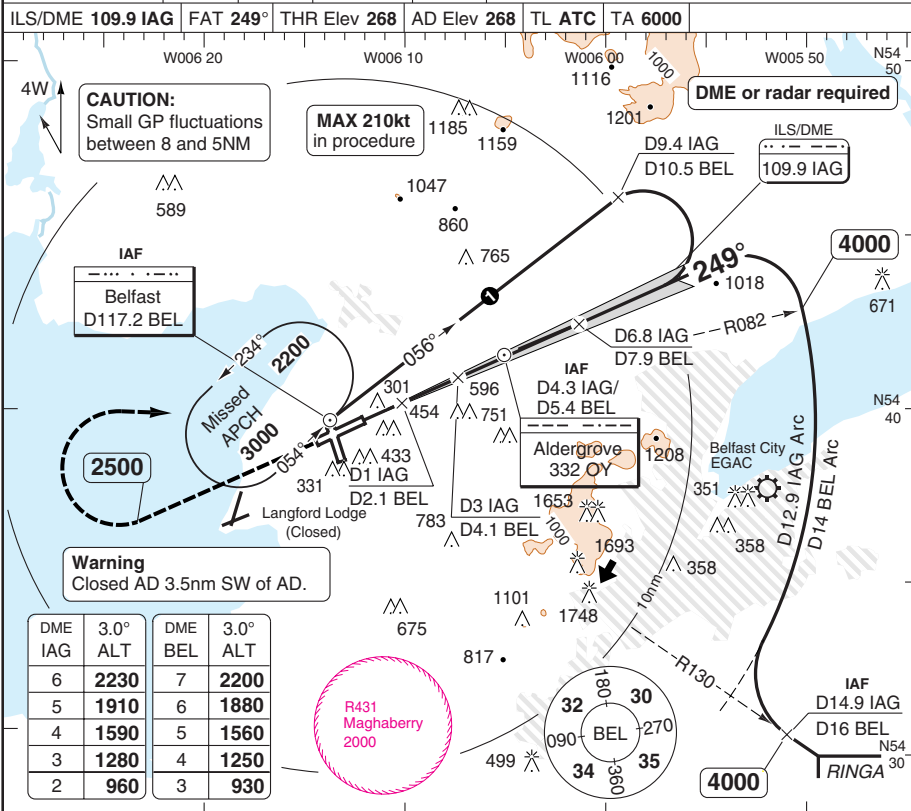


TCH 52										
ACFT	CAT IIIB	CAT IIIA	ACFT	CAT II	ILS+DME	LOC+DME	LOC	Circling	LDA 2780x45 9121x148ft P 3° (57)	
ALL	Available	Available	A	RA 108 300m	470 (200) 550m	680 (412) 1200m	760 (492) 1500m	750 (482) 1.5km ^a		
			B					840 (572) 1.6km		
			C					1180 (912) 2.4km		
			D					1260 (992) 3.6km		
				GS	80	100	120	140	160	^a LOC only: 760 (492) 1.5km
				ROD 3.0°	420	530	640	740	850	
				OM-MAPt	2:33	2:02	1:42	1:27	1:16	

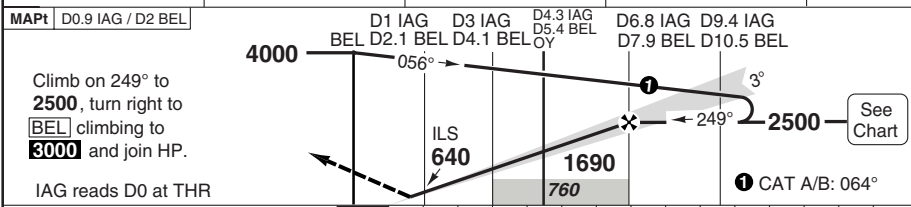
50 - 2
© Navtech - egaa02laip00
EU OPS

ILS Z RWY 25

Aldergrove APP 128.5	RAD 120.9	TWR 118.3	GND 121.75	ATIS 128.2		
ILS/DME 109.9 IAG		FAT 249°	THR Elev 268	AD Elev 268	TL ATC	TA 6000



DME IAG	3.0° ALT	DME BEL	3.0° ALT
6	2230	7	2200
5	1910	6	1880
4	1590	5	1560
3	1280	4	1250
2	960	3	930



TCH 52
Climb on 249° to 2500, turn right to 2500, turn right to BEL climbing to 3000 and join HP.
ILS reads D0 at THR
1 CAT A/B: 064°

ACFT	CAT IIIB	CAT IIIA	ACFT	CAT II	ILS+DME	LOC+DME	LOC	Circling	LDA 2780x45 9121x148ft P 3° (57)
A								750 (482) 1.5km ^a	
B			RA108 300m	470 (200) 550m	680 (412) 1200m	760 (492) 1500m		840 (572) 1.6km	
C	Available	Available						1180 (912) 2.4km	
D								1260 (992) 3.6km	
GS	80	100	120	140	160	^a LOC only: 760 (492) 1.5km			
ROD 3.0°	420	530	640	740	850				
FAF-MAPt	2:33	2:02	1:42	1:27	1:16				

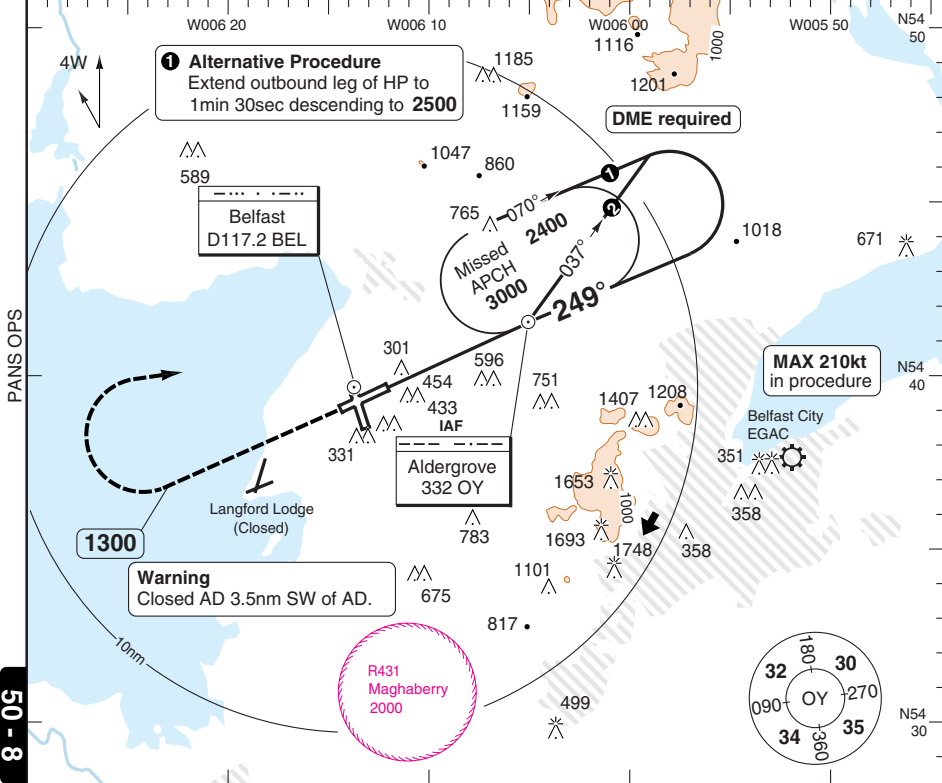
© Navtech - egaa03iaip00

50 - 3

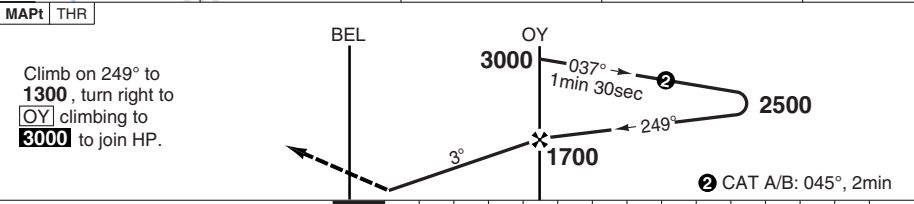
NDB RWY 25

Aldergrove APP 128.5	RAD 120.9	TWR 118.3	GND 121.75	ATIS 128.2
-------------------------	--------------	--------------	---------------	---------------

NDB 332 OY	FAT 249°	THR Elev 268	AD Elev 268	TL ATC	TA 6000
------------	----------	--------------	-------------	--------	---------



50 - 8



MAPt THR

Climb on 249° to 1300, turn right to 037° climbing to 3000 to join HP.

2 CAT A/B: 045°, 2min

ACFT	NDB	Circling	GS	80	100	120	140	160	LDA 2780x45 9121x148ft P 3° (57)
A	760 (492) 1500m	760 (492) 1.5km	ROD 3.0°	420	530	640	740	850	 FALS
B		840 (572) 1.6km	FAF +20s	1560	1520	1490	1450	1420	
C		1180 (912) 2.4km	+40s	1420	1350	1270	1210	1130	
D		1260 (992) 3.6km	+60s	1280	1170	1060	960	850	
			FAF-MAPt	3:11	2:33	2:07	1:49	1:35	

© Navtech - egaa08iaip00

Change: VAR, FAT, OBST, tracks.

THIS CHART IS A PART OF NAVIGRAPH NDAC AND IS INTENDED FOR FLIGHT SIMULATION USE ONLY

WEF 20 OCT 11

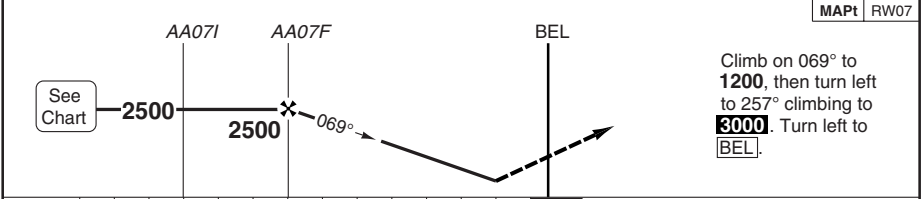
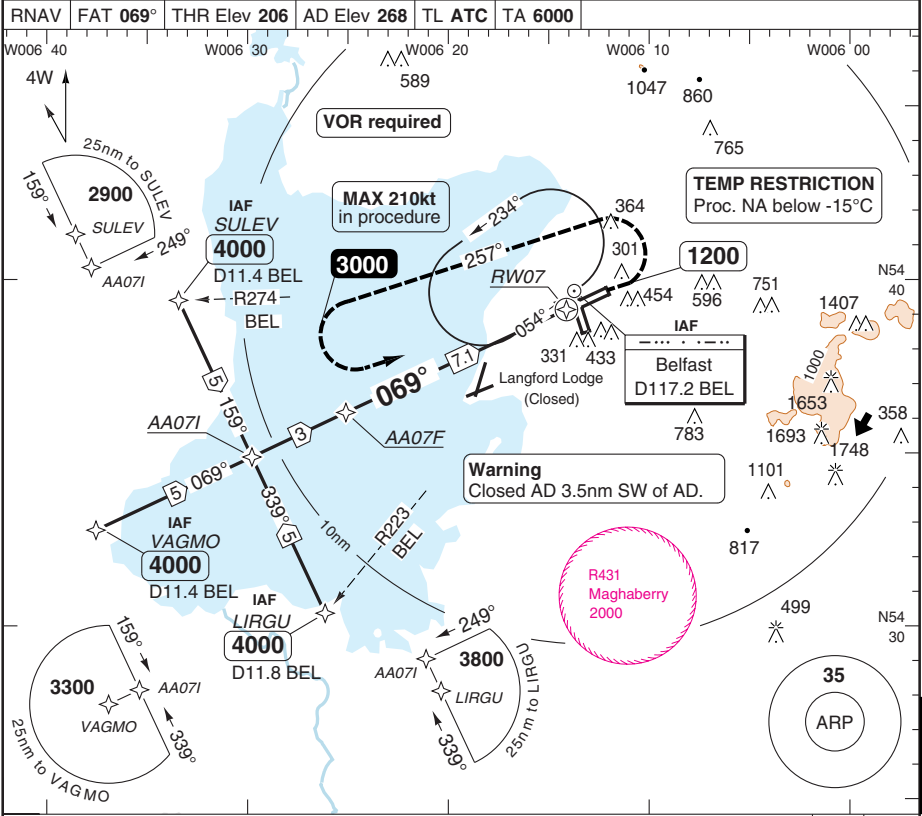
50 - 9 | 21 SEP 11

United Kingdom - EGAA / BFS

RNAV (GNSS) RWY 07

Aldergrove BELFAST

Aldergrove APP 128.5	RAD 120.9	TWR 118.3	GND 121.75	ATIS 128.2	
RNAV	FAT 069°	THR Elev 206	AD Elev 268	TL ATC	TA 6000



						TCH 50		
ACFT	LNAV/VNAV	LNAV	Circling			DIST NM	3.0° ALT	LDA 2780x45 9121x148ft P 3° (74)
A			750 (482) 1.5km			6	2170	
B	520 (314) 1000m	610 (404) 1500m	840 (572) 1.6km			5	1840	
C			1180 (912) 2.4km			4	1520	
D			1260 (992) 3.6km			3	1190	
	GS	80	100	120	140	160		
	ROD 3.0°	420	530	640	740	850		
	RTR-MAPt	0:45	0:36	0:30	0:26	0:22		

© Navtech - egaa09iaip00

50 - 9

IALS

439

WEF 20 OCT 11

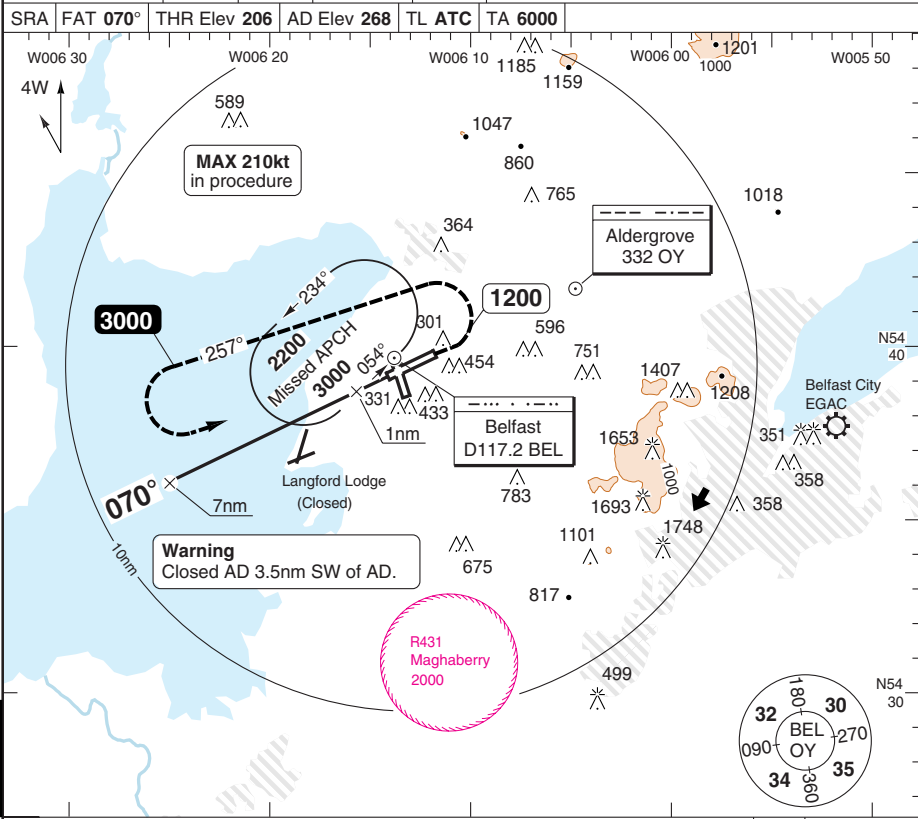
50 - 10 | 21 SEP 11

United Kingdom - EGAA / BFS

SRA RTR 2NM RWY 07

Aldergrove BELFAST

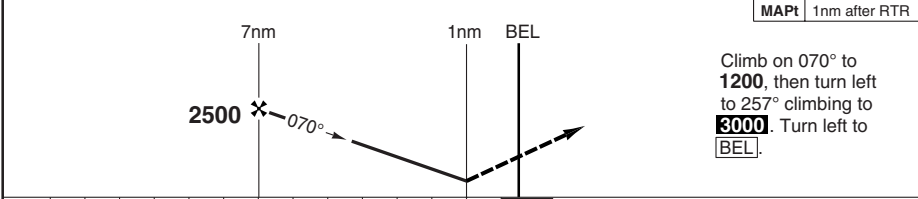
Aldergrove APP 128.5	RAD 120.9	TWR 118.3	GND 121.75	ATIS 128.2	
SRA	FAT 070°	THR Elev 206	AD Elev 268	TL ATC	TA 6000



PANS OPS

50 - 10

MAPt 1nm after RTR



Climb on 070° to 1200, then turn left to 257° climbing to 3000. Turn left to BEL.

nm	13	12	11	10	9	8	7	6	5	4	3	2	1	0	
ACFT	SRA 2NM		Circling												
A	630 (424)	1500m	750 (482)												
B	630 (424)		840 (572)												
C	630 (424)	1600m	1180 (912)												
D	630 (424)		1260 (992)												
	GS	80	100	120	140	160									
	ROD 3.0°	420	530	640	740	850									
	RTR-MAPt	0:45	0:36	0:30	0:26	0:22									

DIST	3.0°	LDA 2780x45
NM	ALT	9121x148ft
6	2170	P 3° (74)
5	1840	
4	1520	
3	1190	
2	860	

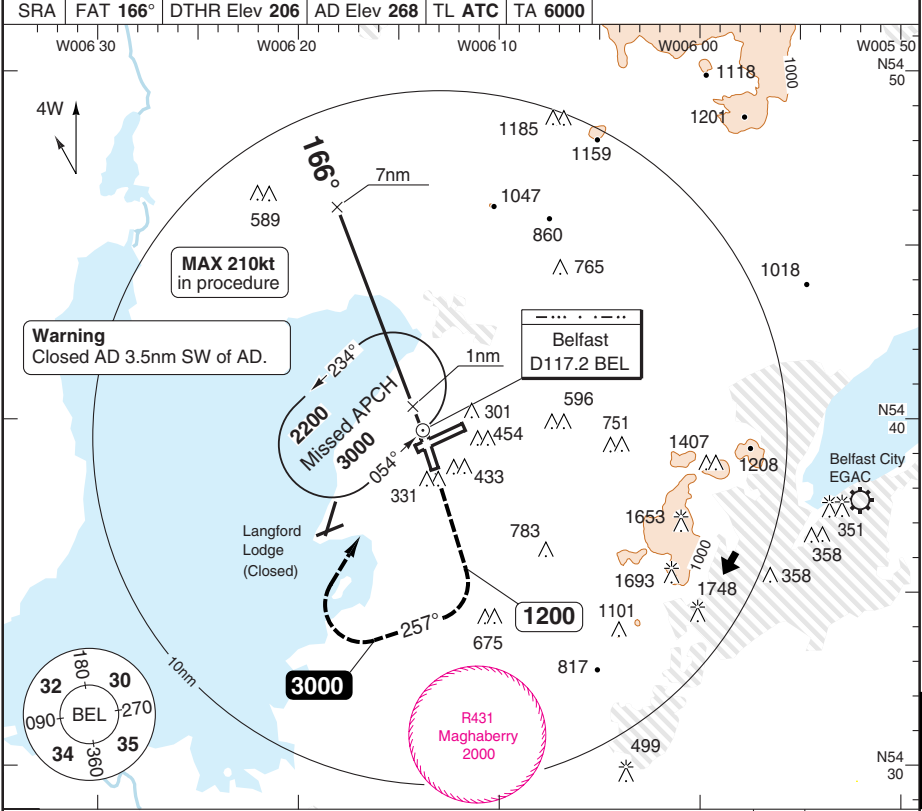
© Navtech - egaal10aip00

Change: VAR, OBST.

THIS CHART IS A PART OF NAVIGRAPH NDAC AND IS INTENDED FOR FLIGHT SIMULATION USE ONLY

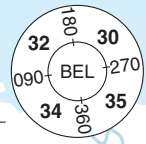
SRA RTR 2NM RWY 17

Aldergrove APP 128.5	RAD 120.9	TWR 118.3	GND 121.75	ATIS 128.2	
SRA	FAT 166°	DTHR Elev 206	AD Elev 268	TL ATC	TA 6000

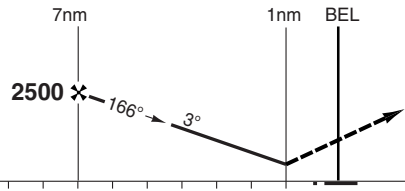


PANS OPS

50 - 11



MAPt 1nm after RTR



Climb on 166° to 1200, turn right to 3° climbing to 3000. Turn right to BEL.

nm	14	13	12	11	10	9	8	7	6	5	4	3	2	1	0
ACFT	SRA 2NM		Circling												
A			750 (482) 1.5km												
B	620 (414) 1200m		840 (572) 1.6km												
C			1180 (912) 2.4km												
D			1260 (992) 3.6km												
GS	80	100	120	140	160										
ROD 3.0°	420	530	640	740	850										
RTR-MAPt	0:45	0:36	0:30	0:26	0:22										
DIST NM	3.0°	LDA 1791x45 5876x148ft P 3° (55)													
	ALT	FALS													
6	2170														
5	1840														
4	1520														
3	1190														
2	860														

© Navitech - egaa11iaip00

Change: VAR, FAT, OBST, tracks.

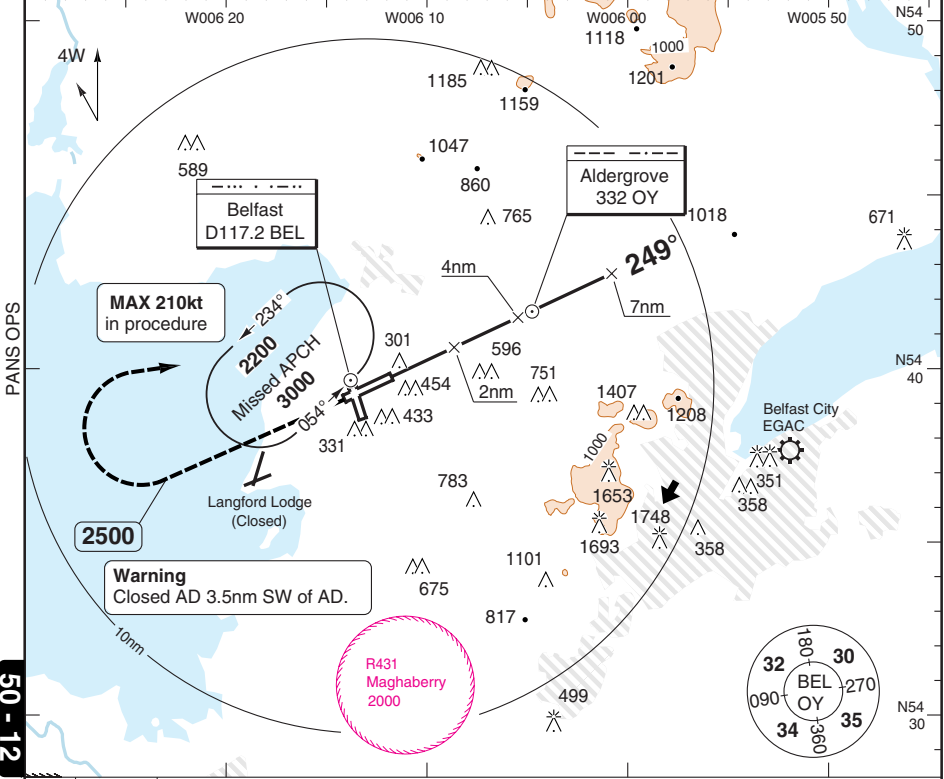
THIS CHART IS A PART OF NAVIGRAPH NDAC AND IS INTENDED FOR FLIGHT SIMULATION USE ONLY

SRA RTR 2NM RWY 25

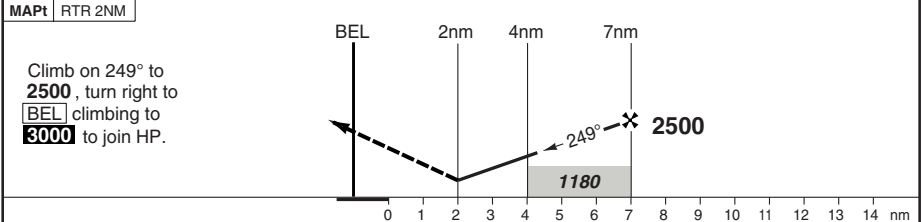
Aldergrove BELFAST

Aldergrove APP 128.5	RAD 120.9	TWR 118.3	GND 121.75	ATIS 128.2
-------------------------	--------------	--------------	---------------	---------------

SRA	FAT 249°	THR Elev 268	AD Elev 268	TL ATC	TA 6000
-----	----------	--------------	-------------	--------	---------



50 - 12



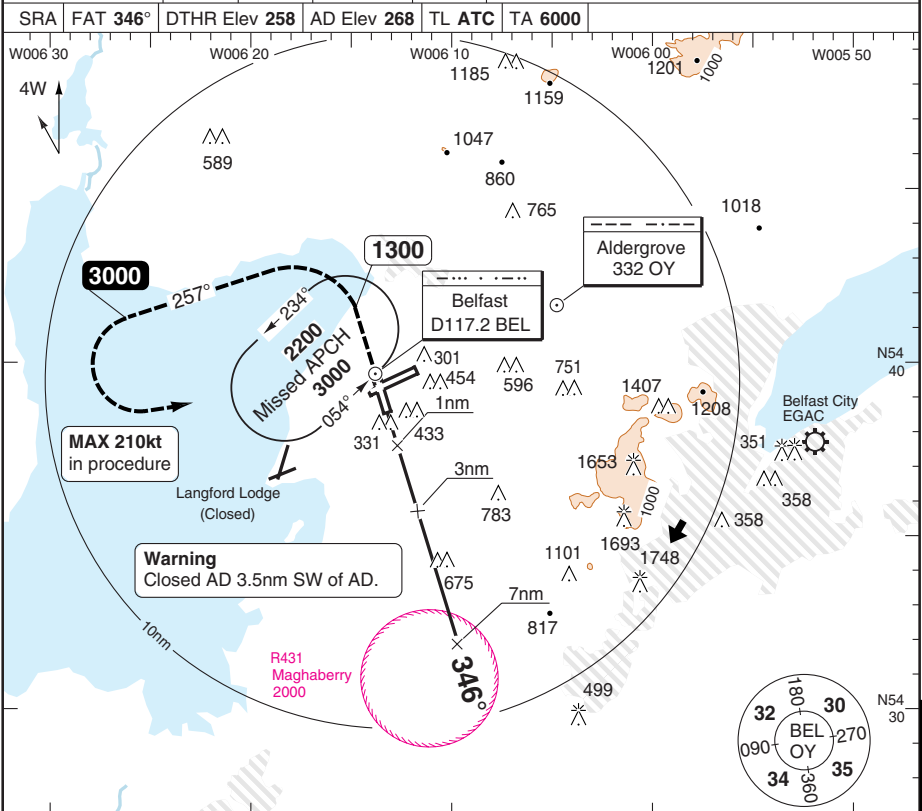
ACFT	SRA 2NM	Circling	DIST NM	3.0° ALT	LDA 2780x45 9121x148ft P 3° (57)	
A	910 (642) 1500m	910 (642) 1.5km	6	2180		
B		910 (642) 1.6km	5	1860		
C	910 (642) 2300m	1180 (912) 2.4km	4	1540		
D		1260 (992) 3.6km	3	1220		
GS	80	100	120	140	160	
ROD 3.0°	420	530	640	740	850	

© Navtech - egaal2aip00

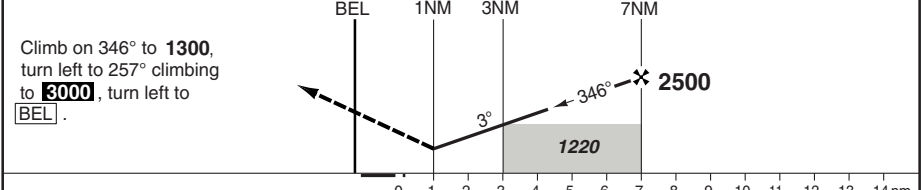
SRA RTR 2NM RWY 35

Aldergrove BELFAST

Aldergrove APP 128.5	RAD 120.9	TWR 118.3	GND 121.75	ATIS 128.2	
SRA	FAT 346°	DTHR Elev 258	AD Elev 268	TL ATC	TA 6000



MAPt 1NM after RTR



ACFT	SRA 2NM	Circling	DIST NM	3.0° ALT	LDA 1799x45 5902x148ft P 3° (47)	
A	700 (442) 1500m	750 (482) 1.5km	6	2180		
B		840 (572) 1.6km	5	1860		
C	700 (442) 1700m	1180 (912) 2.4km	4	1540		
D		1260 (992) 3.6km	3	1220		
			2	900		
GS	80	100	120	140	160	ILS 522
ROD 3.0°	420	530	640	740	850	
RTR-MAPt	0:45	0:36	0:30	0:26	0:22	

Change: VAR, FAT, OBST, tracks.

THIS CHART IS A PART OF NAVIGRAPH NDAC AND IS INTENDED FOR FLIGHT SIMULATION USE ONLY

© Navitech - egaal3iaip00

EU OPS

50 - 13

JAR-OPS Landing Minima

Aldergrove **BELFAST**

The following Minima is for Public Transport aircraft and conforms to JAR-OPS1 regulations.

STRAIGHT-IN APPROACH		C				D			
R/W	Procedure	DA/ MDA QNH ft	DH/ MDH QFE ft	RVR m	RVR No ALS m	DA/ MDA QNH ft	DH/ MDH QFE ft	RVR m	RVR No ALS m
07	VOR/DME	640	440	1400	1800	660	460	1800	2000
07	SRA 2nm	630	430	1400	1800	630	430	1600	2000
17	ILS/DME	410	200	550	1000	410	200	550	1000
17	LLZ/DME	480	280	800	1600	480	280	1200	1800
17	VOR/DME	560	360	1000	1800	560	360	1400	2000
17	VOR	780	580	1200	2000	780	580	1600	2000
17	SRA 2nm	620	420	1000	1800	620	420	1400	2000
25	ILS/DME Y, Z	470	200	550	1000	470	200	550	1000
25	LLZ/DME Y, Z	680	420	1000	1800	680	420	1400	2000
25	LLZ Y, Z	760	500	1200	2000	760	500	1600	2000
25	VORDME	660	400	1000	1800	660	400	1400	2000
25	SRA 2nm	910	650	1200	2000	910	650	1600	2000
25	NDB	760	500	1200	2000	760	500	1600	2000
35	VOR/DME	680	430	1400	1800	680	430	1600	2000
35	SRA 2nm	700	450	1400	1800	700	450	1600	2000

Notes:

CIRCLING		C			D		
R/W	Procedure	MDA QNH ft	MDH QFE ft	Vis m	MDA QNH ft	MDH QFE ft	Vis m
All procs		1180	920	2400	1260	1000	3600

Notes:

TAKE-OFF		C	D
Runway	Facilities	m	m
07, 25	RCLL(H)+REDL(H)+Multi RVR (1)	125	150
07, 25	RCLL+REDL+Multi RVR	150	200
07, 25	RCLL+REDL	200	250
07, 17, 25, 35	RCL and/or REDL (2)	250	300
All	Nil (Day only)	500	500

Notes:

- (1) Subject to Approval.
- (2) For night operations, at least runway edge and end lights required.

JAR-OPS Landing Minima

Aldergrove **BELFAST**

The following Minima is for Public Transport aircraft and conforms to JAR-OPS1 regulations.

STRAIGHT-IN APPROACH		A				B			
R/W	Procedure	DA/ MDA QNH	DH/ MDH QFE	RVR	RVR	DA/ MDA QNH	DH/ MDH QFE	RVR	RVR
		ft	ft	m	m	ft	ft	m	m
07	VOR/DME	610	410	1200	1500	620	420	1300	1500
07	SRA 2nm	630	430	1200	1500	630	430	1300	1500
17	ILS/DME	410	200	550	1000	410	200	550	1000
17	LLZ/DME	480	280	800	1500	480	280	800	1500
17	VOR/DME	560	360	900	1500	560	360	1000	1500
17	VOR	780	580	1000	1500	780	580	1200	1500
17	SRA 2nm	620	420	900	1500	620	420	1000	1500
25	ILS/DME Y, Z	470	200	550	1000	470	200	550	1000
25	LLZ/DME Y, Z	680	420	900	1500	680	420	1000	1500
25	LLZ Y, Z	760	500	1000	1500	760	500	1200	1500
25	VORDME	660	400	900	1500	660	400	1000	1500
25	SRA 2nm	910	650	1000	1500	910	650	1200	1500
25	NDB	760	500	1000	1500	760	500	1200	1500
35	VOR/DME	680	430	1200	1500	680	430	1300	1500
35	SRA 2nm	700	450	1200	1500	700	450	1300	1500

Notes:

CIRCLING		A			B		
R/W	Procedure	MDA QNH	MDH QFE	Vis	MDA QNH	MDH QFE	Vis
		ft	ft	m	ft	ft	m
All procs		750	490	1500	840	580	1600

Notes:

TAKE-OFF		A	B
Runway	Facilities	m	m
07, 25	RCLL(H)+REDL(H)+Multi RVR (1)	125	125
07, 25	RCLL+REDL+Multi RVR	150	150
07, 25	RCLL+REDL	200	200
07, 17, 25, 35	RCL and/or REDL (2)	250	250
All	Nil (Day only)	500	500

Notes:

- (1) Subject to Approval.
- (2) For night operations, at least runway edge and end lights required.

JAR-OPS Landing Minima

Aldergrove **BELFAST**

The following Minima is for Public Transport aircraft and conforms to JAR-OPS1 regulations.

CAT II

Special aircrew and aircraft certification required.

Runways	C				D			
	DA	DH	RA	RVR	DA	DH	RA	RVR
	QNH	QFE			QNH	QFE		
	ft	ft	ft	m	ft	ft	ft	m
25 (1)	368	100	108	300	368	100	108	350

Notes:

1) Cat D RVR may be reduced to 300m when conducting autoland.

Runways	A				B			
	DA	DH	RA	RVR	DA	DH	RA	RVR
	QNH	QFE			QNH	QFE		
	ft	ft	ft	m	ft	ft	ft	m
25	368	100	108	300	368	100	108	300

Notes:

HELICOPTER

Aldergrove BELFAST

The following Minima is for Public Transport Helicopters and conforms to JAR-OPS3 regulations.

STRAIGHT-IN APPROACH

R/W	Procedure	DA/ MDA QNH ft	DH/ MDH QFE ft	Full >=720 RVR m	Inter 420-719 RVR m	Basic < 420 RVR m	No ALS RVR m
07	VOR/DME	610	410	N/A	1000	1000	1000
07	SRA 2nm	630	430	N/A	1000	1000	1000
07	RNAV (L/VNAV)	520	320	N/A	1000	1000	1000
07	RNAV(LNAV)	610	410	N/A	1000	1000	1000
17	ILS/DME	410	200	500	600	700	1000
17	LOC/DME	480	280	600	800	1000	1000
17	VOR/DME	560	360	800	1000	1000	1000
17	VOR	780	580	1000	1000	1000	1000
17	SRA 2nm	620	420	800	1000	1000	1000
25	ILS/DME Y, Z	470	200	500	600	700	1000
25	LOC/DME Y, Z	680	420	800	1000	1000	1000
25	LOC Y, Z	760	500	1000	1000	1000	1000
25	VORDME	660	400	800	1000	1000	1000
25	SRA 2nm	910	650	1000	1000	1000	1000
25	NDB	760	500	1000	1000	1000	1000
35	VOR/DME	680	430	N/A	1000	1000	1000
35	SRA 2nm	700	450	N/A	1000	1000	1000

Notes:

CIRCLING

R/W	Procedures	MDA QNH ft	MDH QFE ft	Vis m
All procs		750	490	800

Notes: